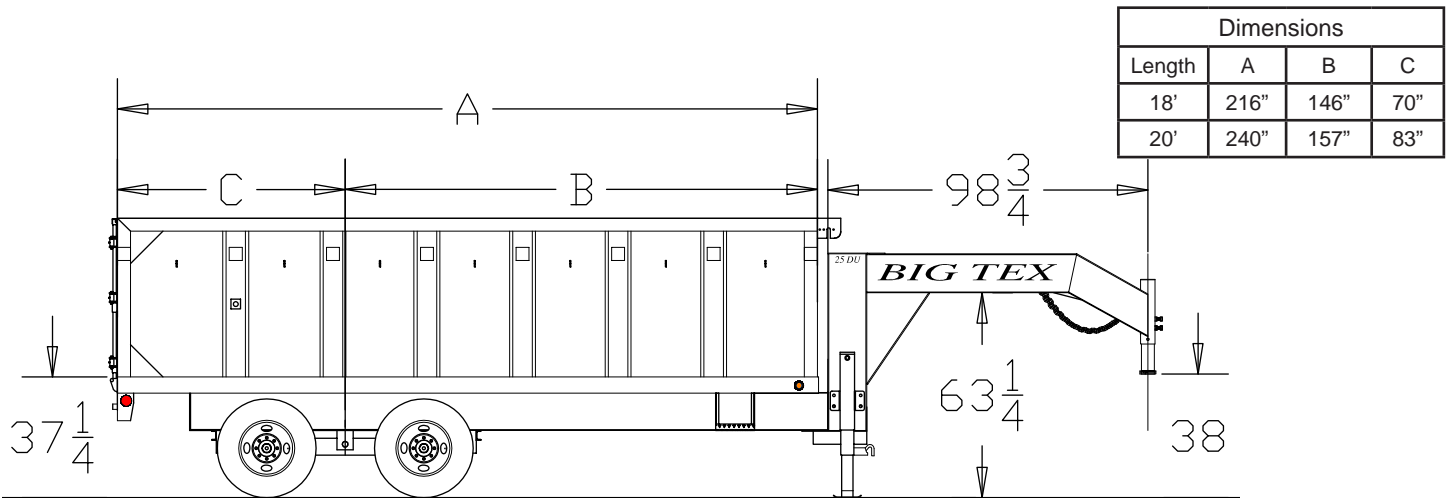


25DU Tandem Dual Gooseneck Dump

G.V.W.R.	25,900#
G.A.W.R. (Ea. Axle)	10,000#
COUPLER	30K 2-5/16" Adjustable Crank Type
SAFETY CHAINS	3/8" Grd. 70 w/Safety Latch Hook (2 each)
JACKS	Two 12K Drop Leg Jacks (Bolted On)
NECK	12" I-Beam
FRAME	12" x 16# I-Beam
FRAME CROSSMEMBERS	8" Channel
BED CROSSMEMBERS	3" Channel
BED LONG SILS	8" Channel
SIDE RAILS	5" x 3" Angle
AXLES	Two 10,000# Dual Wheel Oil Bath Electric Brakes
SUSPENSION	Multi-Leaf Slipper Spring w/Equalizer
TIRE	ST235/80 R-16 Load Range E
WHEEL	16 x 6 Dual 8 Bolt
FLOOR	10 Gauge Smooth Steel
LIGHTS	LED D.O.T. Stop, Tail, Turn & Clearance
ELEC. PLUG	7-Way RV
FINISH (Prep)	Steel is Cleaned to Ensure a Professional Smooth Finish.
FINISH	Superior Quality Finish is Applied for a Highly Decorative and Protective Finish.

Standard Features

- Safety Chains Attached w/Cold Rolled Eyelets
- Lockable Pump & Battery Box Between Gooseneck Uprights
- 48" Sides w/Formed Channel Supports
- J-Hooks for Tie Down
- Heavy Duty 10 Gauge Floor
- 4-5/8" D-Rings Inside Bed
- Self Contained Electric Hydraulic Scissor Lift
- 5 Amp Charger
- Spare Tire Mount
- Modular Sealed Wiring Harness
- Complete Break-A-Way System w/Charge Line
- Double Rear Gates w/Cam Latch
- Removable Header Across Rear
- Grommet Mount Sealed LED Lighting



MODEL#	DESCRIPTION
25DU-18	92" x 18' Tandem Dual Gooseneck Dump
25DU-20	92" x 20' Tandem Dual Gooseneck Dump

TRAILER WEIGHTS & CAPACITIES

LENGTH	EMPTY WEIGHT	PAYLOAD	BOX CAPACITY
18'	7,620#	17,800#	21.98 Cubic Yards
20'	8,070#	17,340#	23.70 Cubic Yards

OPTIONS

Dual 2-Speed Landing Gear	2 Watt Solar Charger
12 K HD Electric Brake Axles w/HD Suspension	5 Watt Solar Charger
Spare Tire (ST235/80 R-16 LR-E)	Crank Style Roll Tarp
8' Slide In Ramps	Roll Tarp w/Side Flaps - 18'
Wireless Remote	Roll Tarp w/Side Flaps - 20'